

BRIDGESTONE

OFF-THE-ROAD TYRES FOR
VOLVO CONSTRUCTION EQUIPMENT

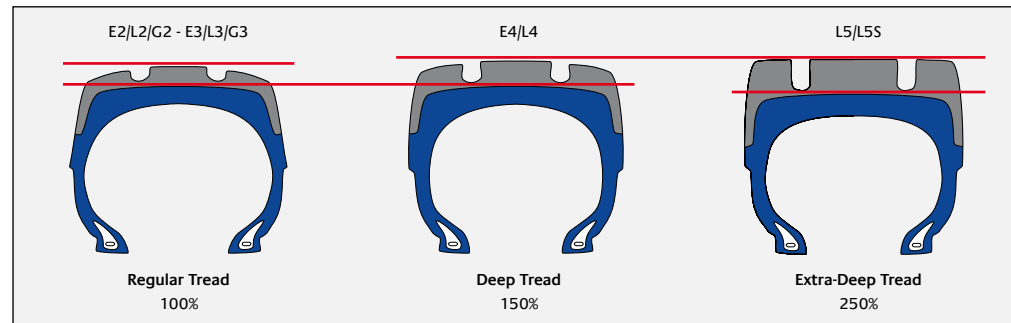


 | Compact & Medium Loaders 4 - 7

 | Articulated Dump Trucks 8 - 9

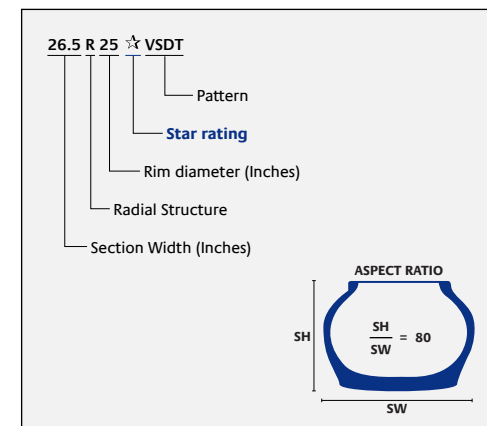
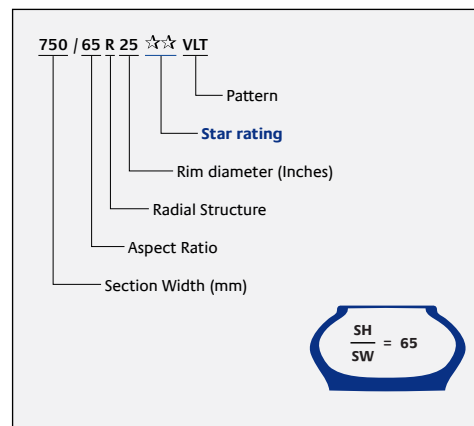
 | Excavator (Twin-fitments) 10

Tyre tread classification by TRA





65" series benefits / purpose -vs. 80"

Lower ground pressure for better flotation on muddy and soft ground, and reduced ground damage.



Legend

 Bridgestone tyre is homologated by Volvo for related machine but might not be listed in Volvo product documentation. Please contact the appropriate Volvo account coordinator.

 Bridgestone tyre is available for related machine as replacement but not homologated as OE fitment.



Pattern				VUT	VSW	VJT	VTS
Tread depth				Standard	Standard	Standard	Standard
Characteristics				Economical radial	Snow operation	High total performance	High total performance
Recommended ground surface							
Machine Model	Tyre Size	Front kPa	Rear kPa	L2	L2	L3	L3
L45H	15.5 R25	400	200	*			
L50H	17.5 R25	450	200		*	*	
L60H	17.5 R25	450	300		*	*	
	600/65 R25	350	200		MS	*	
L70H	20.5 R25	350	200		MS	*	
	600/65 R25	350	200		*		
L90H	20.5 R25	400	250		MS	*	
	600/65 R25	400	250		*		
L110H	650/65 R25	350	250				*
	23.5 R 25	400	250		MS	*	
L120H	750/65 R25	350	250				*
	23.5 R 25	425	250		MS	*	
L150H	750/65 R25	400	300				*
	26.5 R 25	400	300			*	
L180H	775/65 R29	450	300			*	
	26.5 R 25	450	300				*
L180H High-Lift	775/65 R29	450	300				*
L220H	29.5 R25	450	300				
	875/65 R29	450	350				MS
L250H	29.5 R25	500	300				
	875/65 R29	450	350				
L350F	35/65 R33	550	400				



Pattern							VLT	VSNT	VLTS	VSDT	VSDL	VSDR	VSMS
Tread depth							Standard	Deep	Deep	Extra-Deep	Extra-Deep	Extra-Deep	Extra-Deep
Characteristics							Flotation on muddy surface	Traction	Traction	Traction	Rock	Rock	Smooth
Recommended ground surface													
Machine Model	Tyre Size	Front kPa	Rear kPa	L3	L4	L4	L5	L5	L5	L5	L5		
								*					
								*	**		**		
								*	**		**		
	MS					MS		*	**	**			
	MS					MS		*	**	**			
	MS					MS		*	**	**			
	MS					MS		*	**	**			
	MS					MS		*	**	**			
	MS					MS		*	**	**	**		
	MS	MS				MS		*	**	**	**		
	MS	MS				MS		*	**	**	**		
					**		**	**					
						MS							
					**		**	**					
					**		**	**					
					**		**	** IDU					

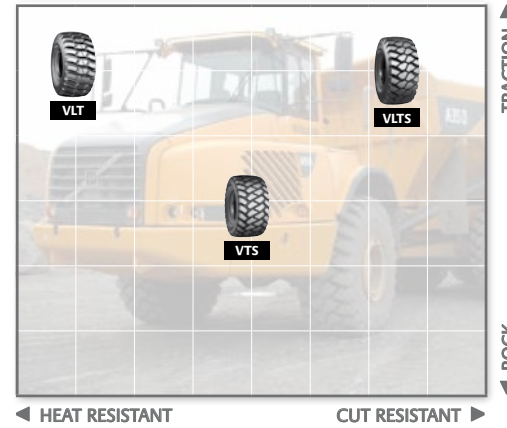
Star Rating (*): Indicates the load capacity of a radial tyre at a given inflation pressure.

Multiple Star (MS) Rating: This refers to Bridgestone radial tyres with both markings "LOADER & DOZER * (one star)" and "EARTHMOVING ** (two star)". Those tyres can be used for both applications under their specific related load capacity and speed, meaning * (one star) is applicable on LOADER & DOZER and ** (two star) is applicable on ARTICULATED DUMP TRUCK.

The indicated air-pressures are the Volvo recommendation for standard machines. For any clarification or advice on suitable pressures for non-standard or additional application, please contact your Bridgestone representative.



Pattern		VLT		VTS		VLTS	
Tread depth		Standard		Standard		Deep	
Characteristics		Muddy & Soft		High total performance		Muddy & Soft	
Recommended ground surface							
Machine Model	Tyre Size	Front kPa	Rear kPa	E3	E3	E4	
A25G	23.5 R25	375	400	MS		MS	
	750/65 R25	375	400	MS		**	
A30G	23.5 R25	400	450	MS		MS	
	750/65 R25	375	400	MS		**	
A35G	26.5 R25	375	450	MS		**	
A40G	29.5 R25	350	425	MS		**	
	875/65 R29	350	400		MS	MS	
A60H	33.25R29	375	500	**			



VLT

E3



Suitable for wet, soft and muddy surfaces. Offers an excellent manoeuvrability, traction and flotation. Also ensures a very comfortable ride due to its superb stability.

VTS

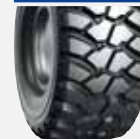
E3



This new generation of tyre offers an exceptional stability with its wider contact surface, a superior driving comfort, an optimum traction and self-cleaning.

VLTS

E4



Particularly suitable for rocky and abrasive conditions with superior traction, even in muddy conditions. It also offers good handling and comfort on hard packed surfaces. It has a long tread life and an excellent cut resistance.

Star Rating (*): Indicates the load capacity of a radial tyre at a given inflation pressure.

Multiple Star (MS) Rating: This refers to Bridgestone radial tyres with both markings "LOADER & DOZER ★ (one star)" and "EARTHMOVING ** (two star)". Those tyres can be used for both applications under their specific related load capacity and speed, meaning ★ (one star) is applicable on LOADER & DOZER and ** (two star) is applicable on ARTICULATED DUMP TRUCK.

The indicated air-pressures are the Volvo recommendation for standard machines.
For any clarification or advice on suitable pressures for non-standard or additional application, please contact your Bridgestone representative.

BRIDGESTONE BELUX NV/SA

Kleine Kloosterstraat 10 - 1932 Zaventem, België

RCS Mechelen n. 0404.954.610

www.bridgestone.be

BRIDGESTONE NEDERLAND B.V.

Verryn Stuartlaan 44 - 2288 EN Rijswijk, Nederland

K.v.K 20079162

www.bridgestone.nl



The information contained in this publication is for guidance purposes only. Whilst every effort has been made in its production, no responsibility can be accepted for any loss or damage arising from any undetected error. Any data supplied is subject to possible revision following the date of publication. Realisation: Unides • Printed by Unides • BS OTR BSEU - 02/16 • 1004306